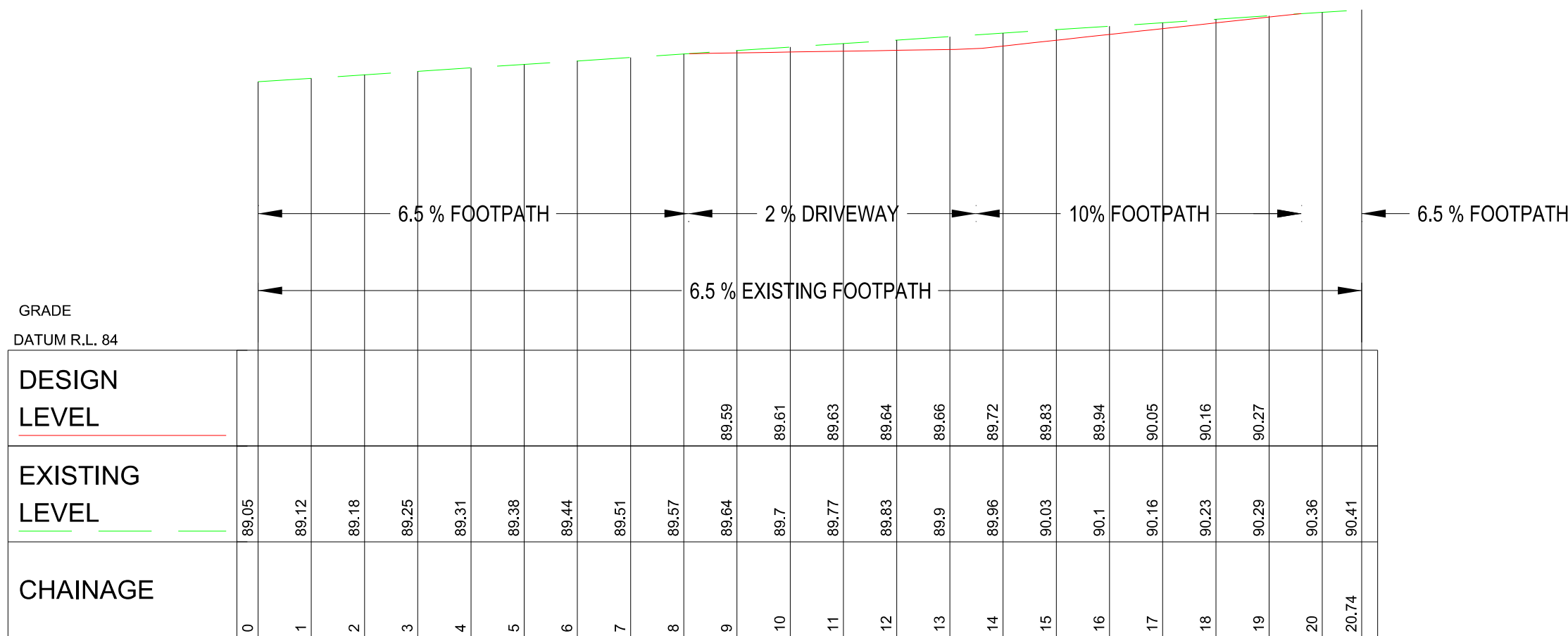


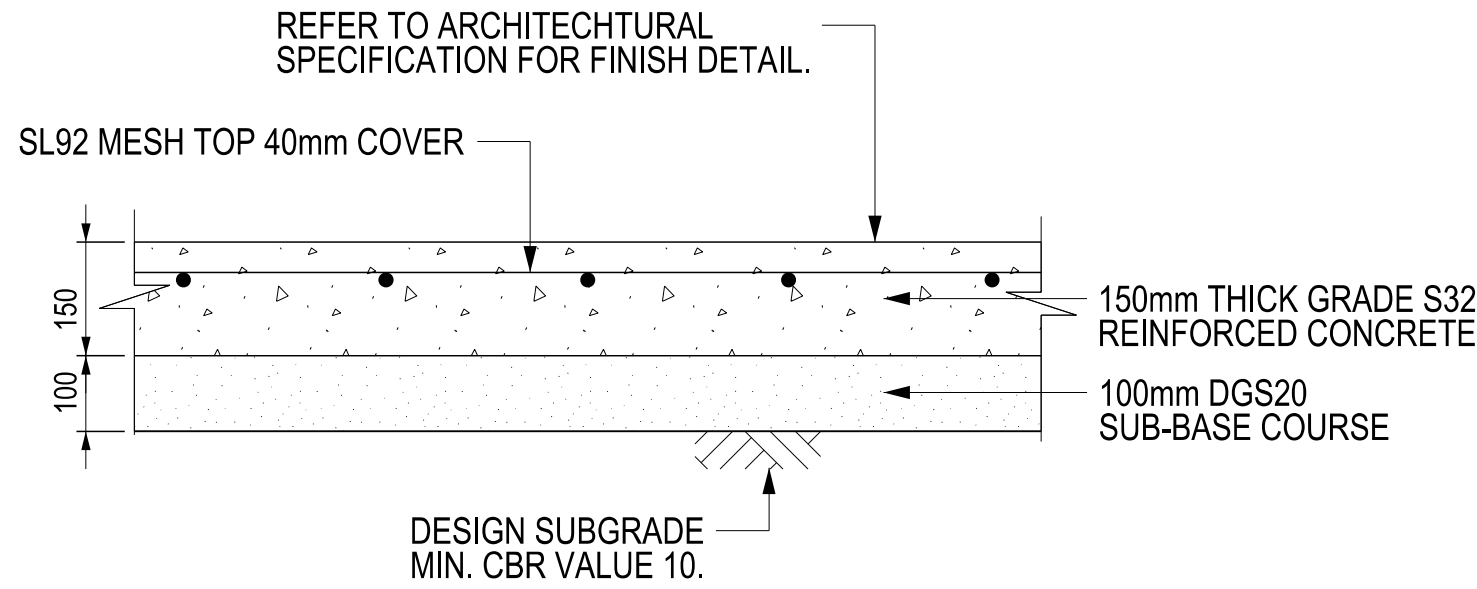
DRIVEWAY GENERAL ARRANGEMENT PLAN

SCALE 1:100



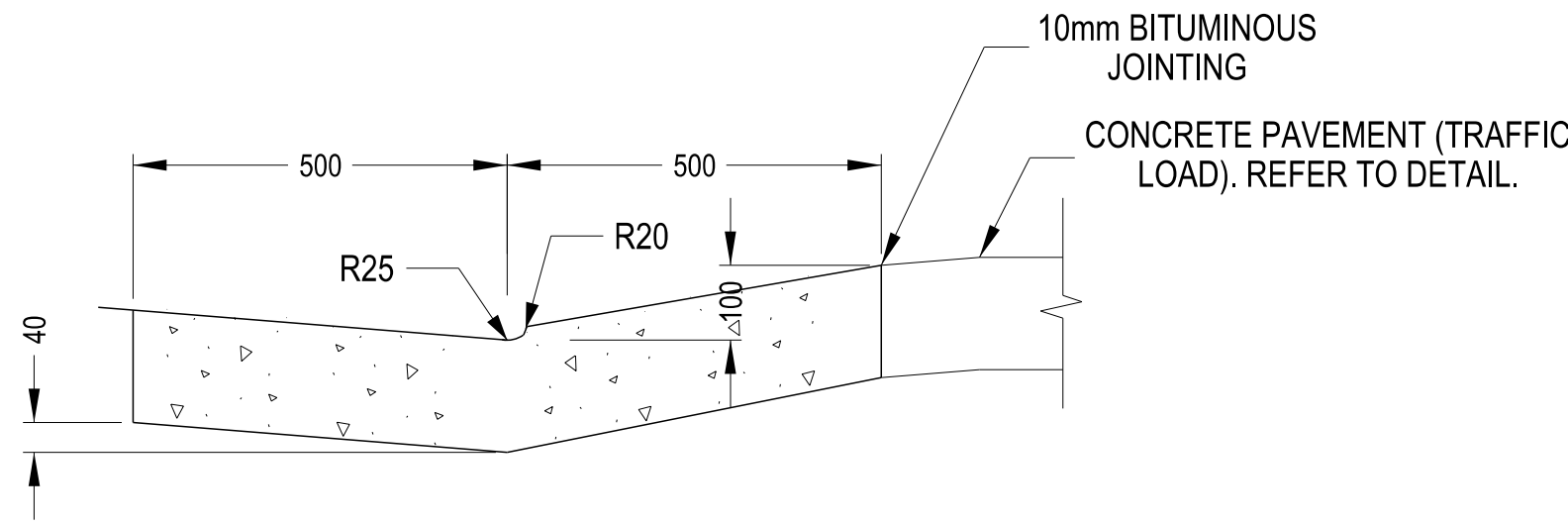
SECTION CC

SCALE 1:100



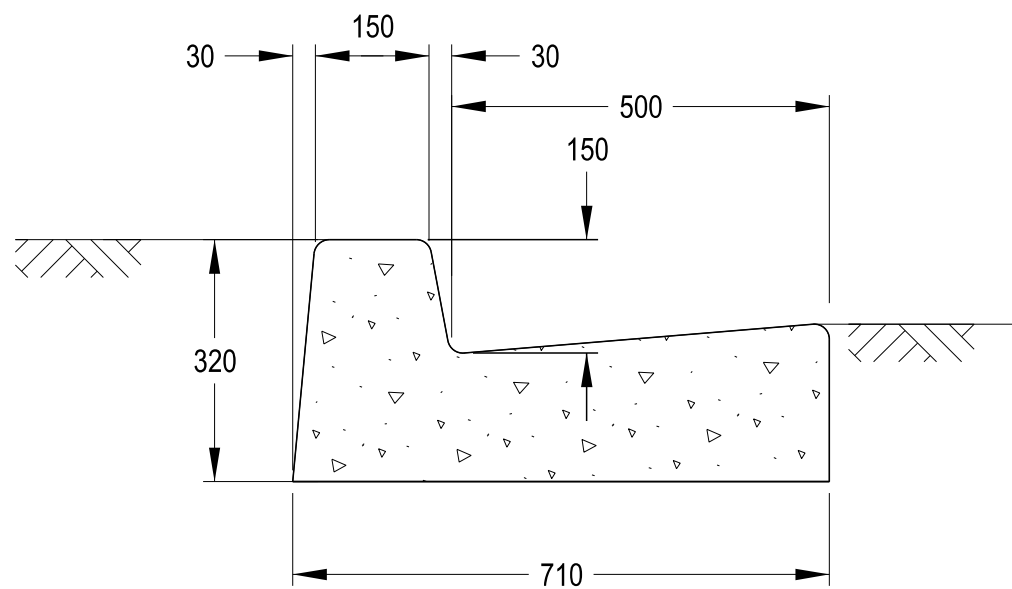
CONCRETE PAVEMENT TYPE 2 (CP2 - TRAFFIC LOAD)

SCALE 1:10



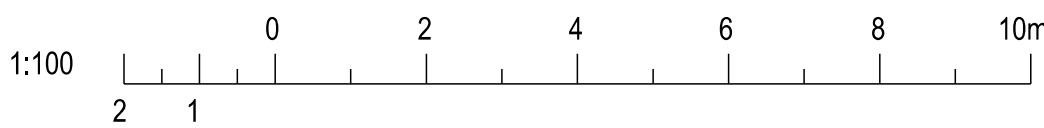
TYPICAL GUTTER CROSSING DETAIL

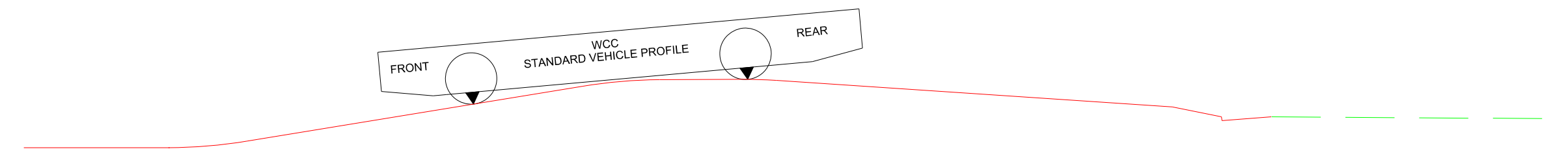
SCALE 1:10



TYPICAL KERB AND GUTTER DETAIL (KG)

SCALE 1:10





The diagram illustrates the WCC Standard Vehicle Profile. It features a horizontal bar with a trapezoidal shape, labeled "FRONT" on the left and "REAR" on the right. In the center of the bar is the text "WCC STANDARD VEHICLE PROFILE". Below the bar, a red line graph shows a curve that starts at a low level on the left, rises to a peak under the "FRONT" label, dips slightly, rises again to a higher peak under the "REAR" label, and then gradually declines towards the right. The graph is plotted against a background of horizontal dashed lines.

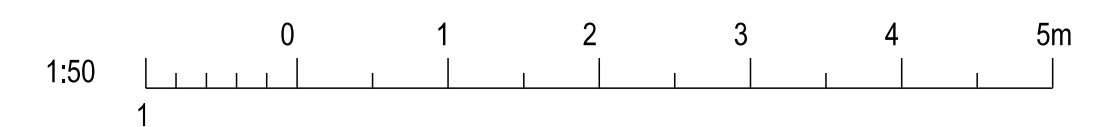
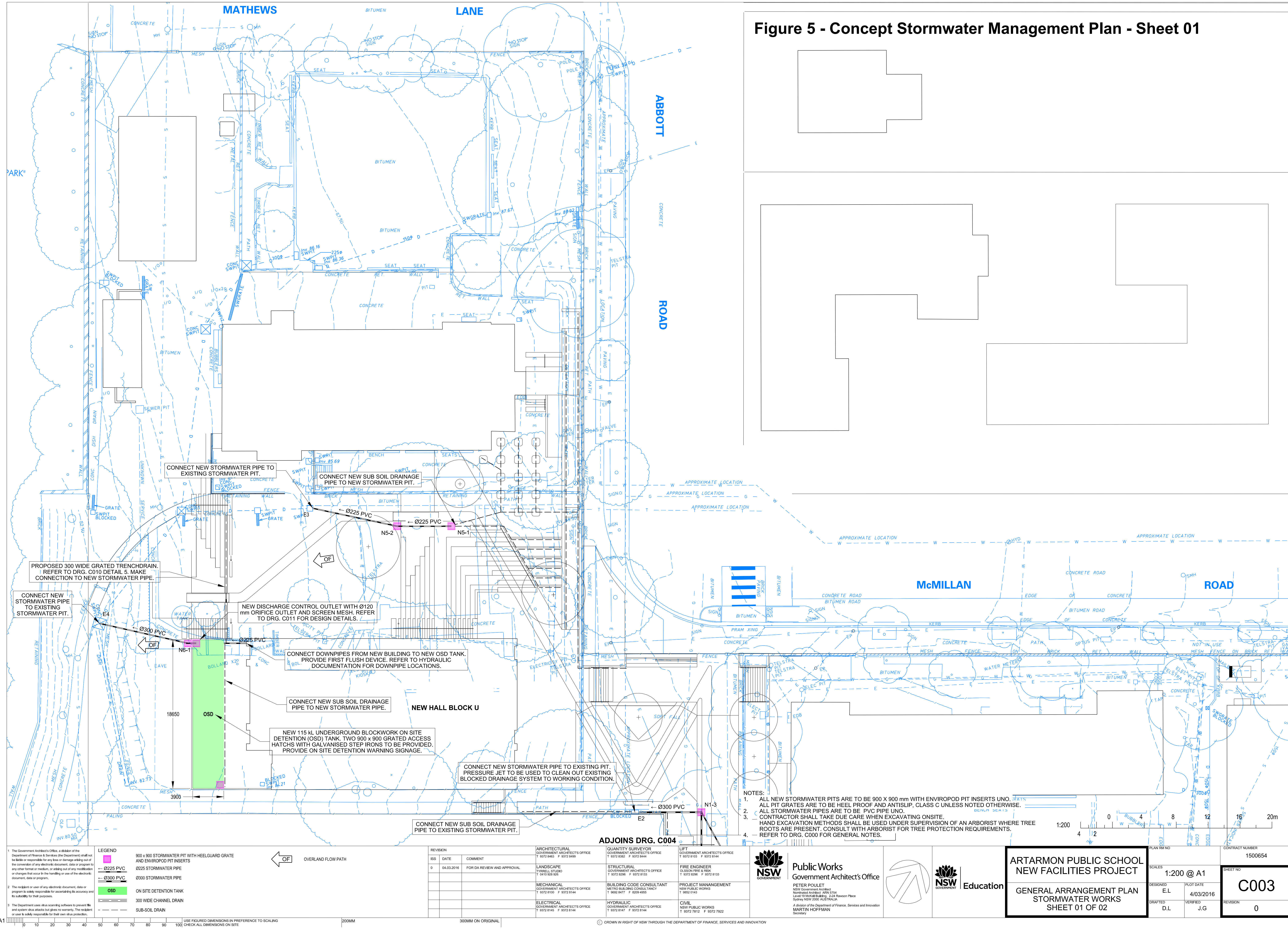


Figure 5 - Concept Stormwater Management Plan - Sheet 01



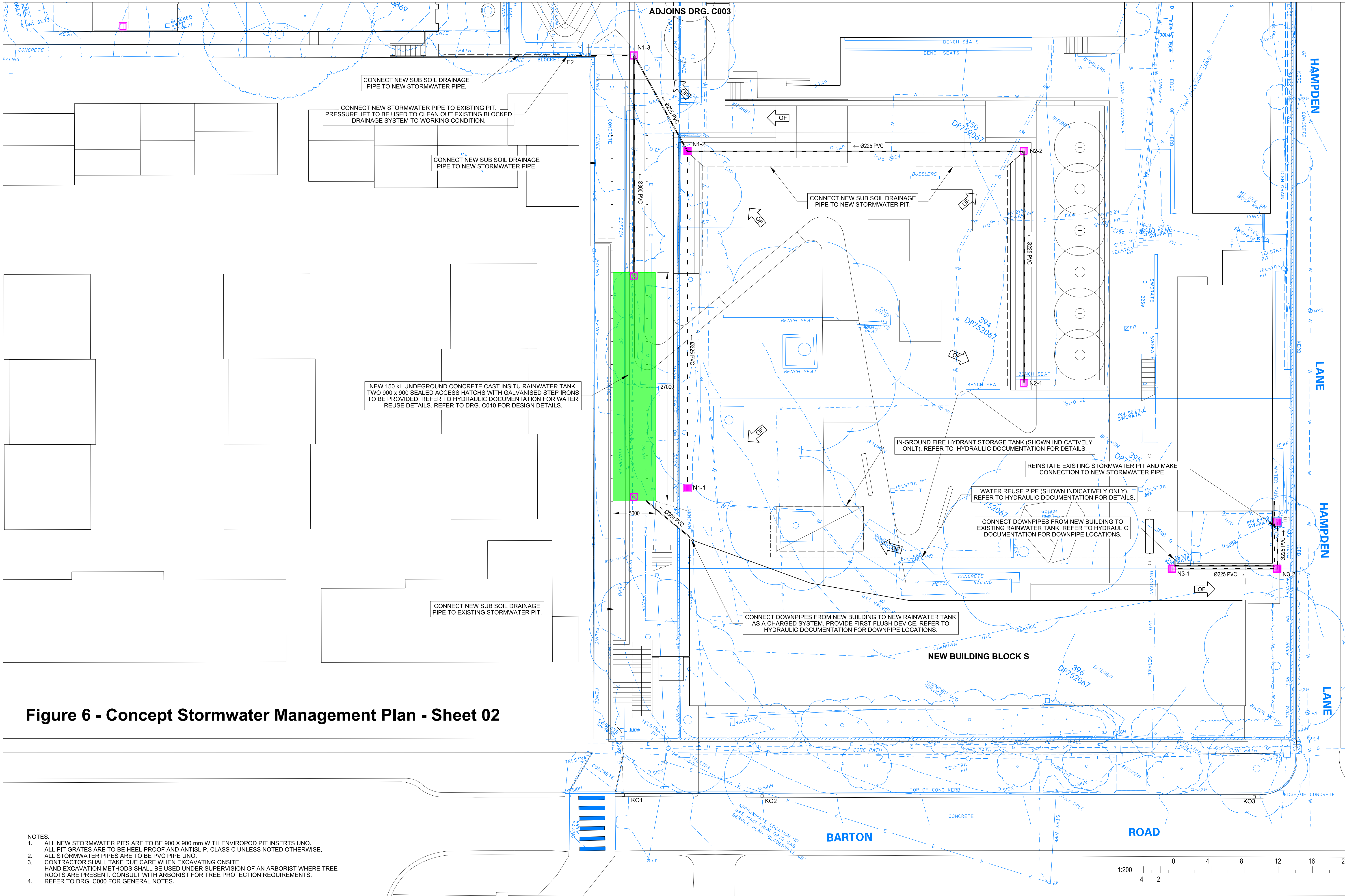
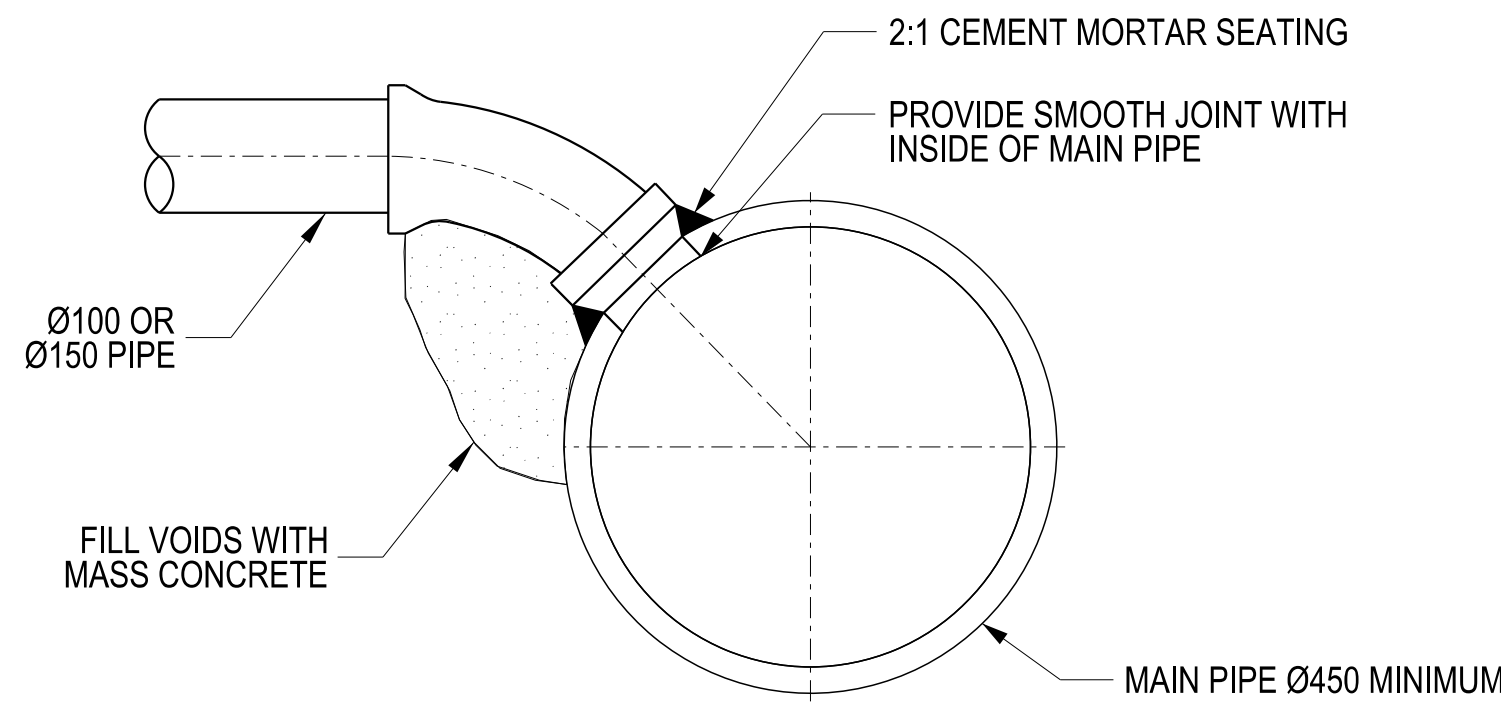


Figure 6 - Concept Stormwater Management Plan - Sheet 02

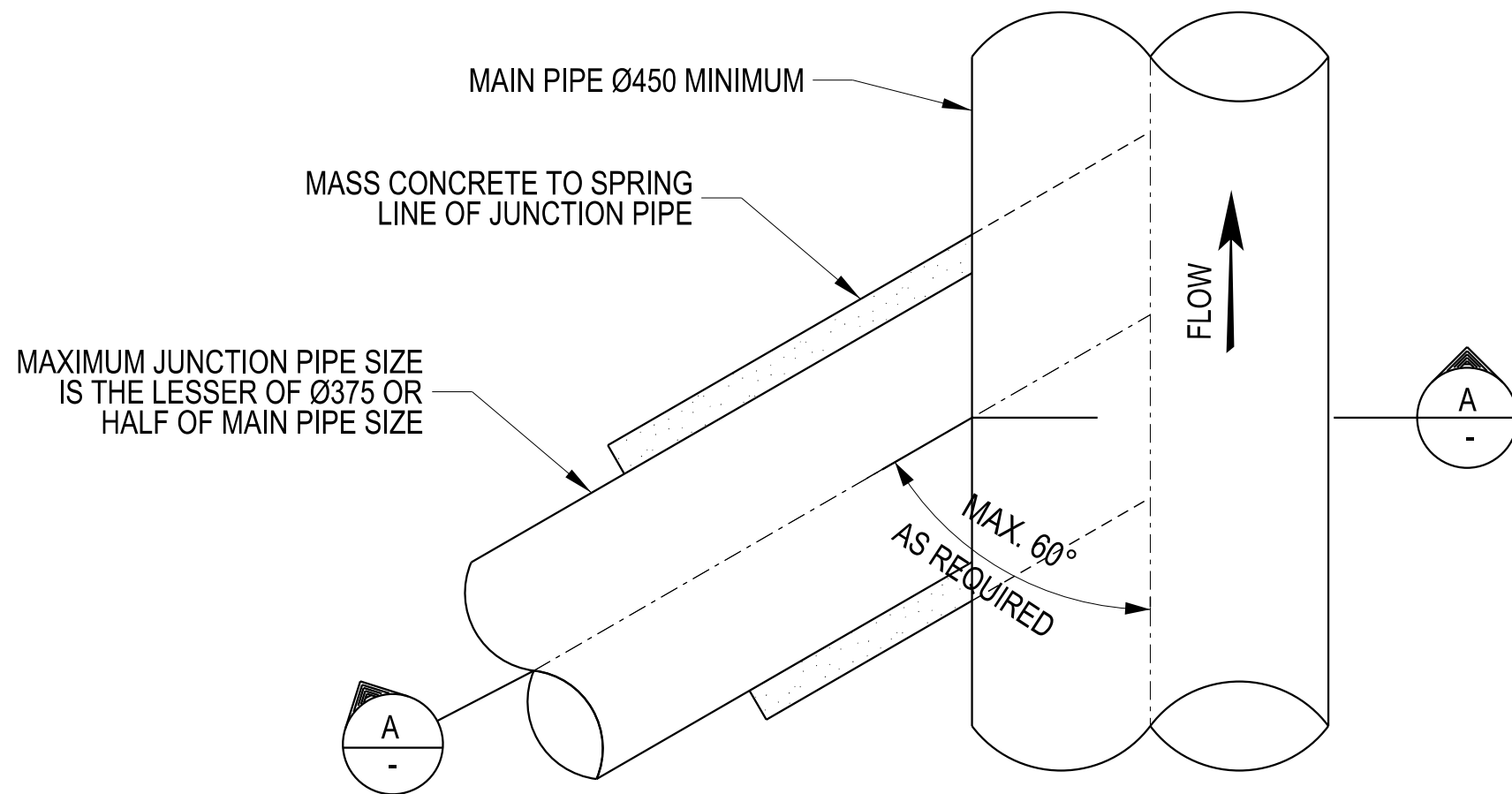
- NOTES:
1. ALL NEW STORMWATER PITS ARE TO BE 900 X 900 mm WITH ENVIPOD PIT INSERTS UNO. ALL PIT GRATES ARE TO BE HEEL PROOF AND ANTISLIP, CLASS C UNLESS NOTED OTHERWISE.
 2. ALL STORMWATER PIPES ARE TO BE PVC PIPE UNO.
 3. CONTRACTOR SHALL TAKE DUE CARE WHEN EXCAVATING ONSITE. HAND EXCAVATION METHODS SHALL BE USED UNDER SUPERVISION OF AN ARBORIST WHERE TREE ROOTS ARE PRESENT. CONSULT WITH ARBORIST FOR TREE PROTECTION REQUIREMENTS. REFER TO DRG. C000 FOR GENERAL NOTES.
 - 4.

<p>1 The Government Architect's Office, a division of the Department of Finance & Services (the Department) shall not be liable or responsible for any loss or damage arising out of the conversion of any electronic document, data or program to any other format or medium, or relating to any modification or changes that occur in the handling or use of the electronic document, data or program.</p> <p>2 The recipient or user of any electronic document, data or program is solely responsible for ascertaining its accuracy and its suitability for their purposes.</p> <p>3 The Department uses virus scanning software to prevent file and system virus attacks but gives no warranty. The recipient or user is solely responsible for their own virus protection.</p>		<p>LEGEND</p> <p>PROPOSED 900 x 900 STORMWATER PIT WITH HEEL GUARD GRATE AND ENVIPOD PIT INSERTS</p> <p>PROPOSED 0225 STORMWATER PIPE</p> <p>PROPOSED 0300 STORMWATER PIPE</p> <p>PROPOSED UNDERGROUND RAINWATER TANK</p> <p>PROPOSED 300 WIDE CHANNEL DRAIN</p> <p>EXISTING KERB OUTLET (FOR INFORMATION ONLY)</p> <p>OVERLAND FLOW PATH</p> <p>PROPOSED RAINWATER TANK ACCESS PIT</p>		<p>REVISION</p> <table><thead><tr><th>ISS</th><th>DATE</th><th>COMMENT</th></tr></thead><tbody><tr><td>0</td><td>04.03.2016</td><td>FOR DA REVIEW AND APPROVAL</td></tr></tbody></table>		ISS	DATE	COMMENT	0	04.03.2016	FOR DA REVIEW AND APPROVAL	<p>ARCHITECTURAL</p> <p>GOVERNMENT ARCHITECT'S OFFICE</p> <p>T 9372 8463 F 9372 8469</p> <p>LANDSCAPE</p> <p>TYRRELL STUDIO</p> <p>T 0410 928 928</p> <p>MECHANICAL</p> <p>GOVERNMENT ARCHITECT'S OFFICE</p> <p>T 9372 8100 F 9372 8144</p> <p>ELECTRICAL</p> <p>GOVERNMENT ARCHITECT'S OFFICE</p> <p>T 9372 8140 F 9372 8144</p>		<p>QUANTITY SURVEYOR</p> <p>GOVERNMENT ARCHITECT'S OFFICE</p> <p>T 9372 8382 F 9372 8444</p> <p>STRUCTURAL</p> <p>GOVERNMENT ARCHITECT'S OFFICE</p> <p>T 9372 8309 F 9372 8103</p> <p>BUILDING CODE CONSULTANT</p> <p>METRO BUILDING CONSULTANCY</p> <p>T 9600 8477 F 8200 4955</p> <p>HYDRAULIC</p> <p>GOVERNMENT ARCHITECT'S OFFICE</p> <p>T 9372 8147 F 9372 8144</p>		<p>LIFT</p> <p>GOVERNMENT ARCHITECT'S OFFICE</p> <p>T 9372 8103 F 9372 8144</p> <p>FIRE ENGINEER</p> <p>CLUSION FIRE & RISK</p> <p>T 9372 8309 F 9372 8103</p> <p>PROJECT MANAGEMENT</p> <p>NEW PUBLIC WORKS</p> <p>T 9852 0143</p> <p>CIVIL</p> <p>NEW PUBLIC WORKS</p> <p>T 9372 7912 F 9372 7922</p>		<p>Public Works</p> <p>Government Architect's Office</p> <p>PETER POULET</p> <p>NSW Government Architect</p> <p>Northwest Architect ARN 5154</p> <p>Level 15 Macquarie Building, 224 Macquarie Place</p> <p>Sydney NSW 2000 AUSTRALIA</p> <p>A division of the Department of Finance, Services and Innovation</p> <p>MARTIN HOFFMAN</p> <p>Secretary</p>		<p>NSW Education</p>		<p>ARTARMON PUBLIC SCHOOL</p> <p>NEW FACILITIES PROJECT</p> <p>GENERAL ARRANGEMENT PLAN</p> <p>STORMWATER WORKS</p> <p>SHEET 02 OF 02</p>		<p>PLAN RM NO</p> <p>CONTRACT NUMBER</p> <p>1500654</p> <p>SHEET NO</p> <p>C004</p> <p>DESIGNED</p> <p>E.L.</p> <p>PLOT DATE</p> <p>4/03/2016</p> <p>DRAWN</p> <p>D.L.</p> <p>VERIFIED</p> <p>J.G.</p> <p>REVISION</p> <p>0</p>	
ISS	DATE	COMMENT																							
0	04.03.2016	FOR DA REVIEW AND APPROVAL																							



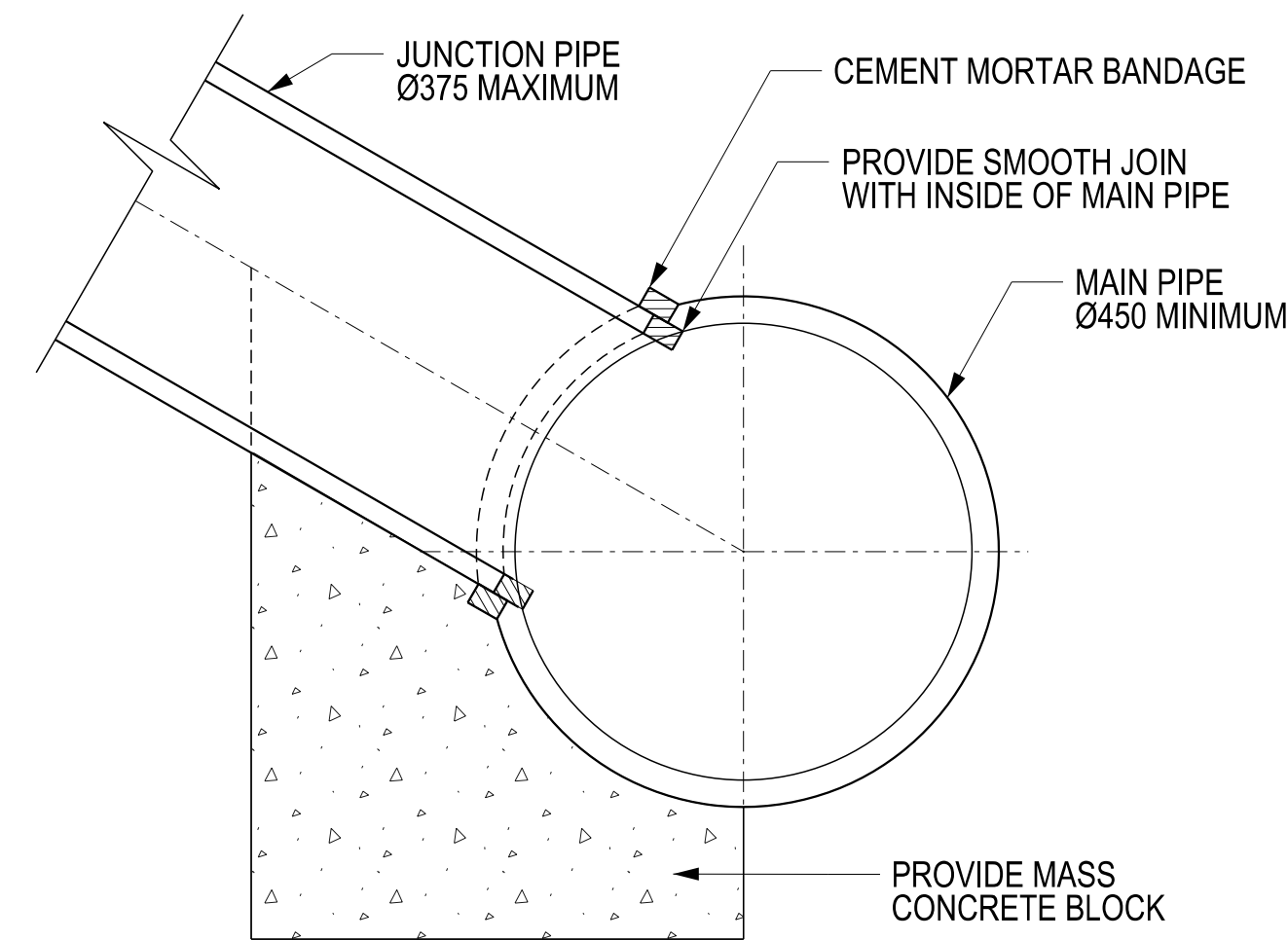
PLAN VIEW
TYPICAL Ø100 OR Ø150 DRAINAGE LINES TO CONCRETE PIPE CONNECTION DETAIL

1



PLAN VIEW
TYPICAL Ø225, Ø300 OR Ø375 DRAINAGE LINES TO CONCRETE PIPE CONNECTION DETAIL

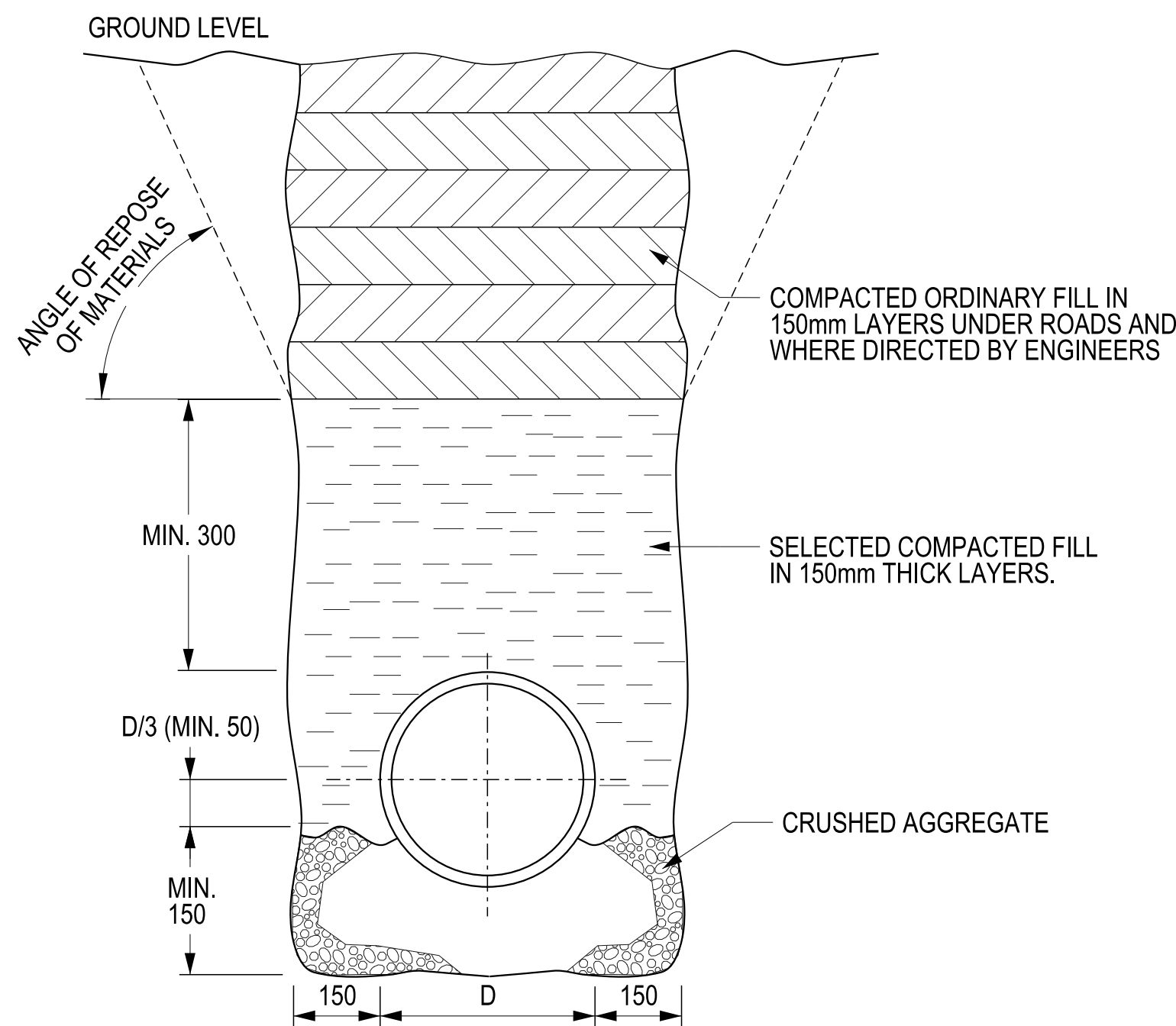
2



SECTION A-A VIEW

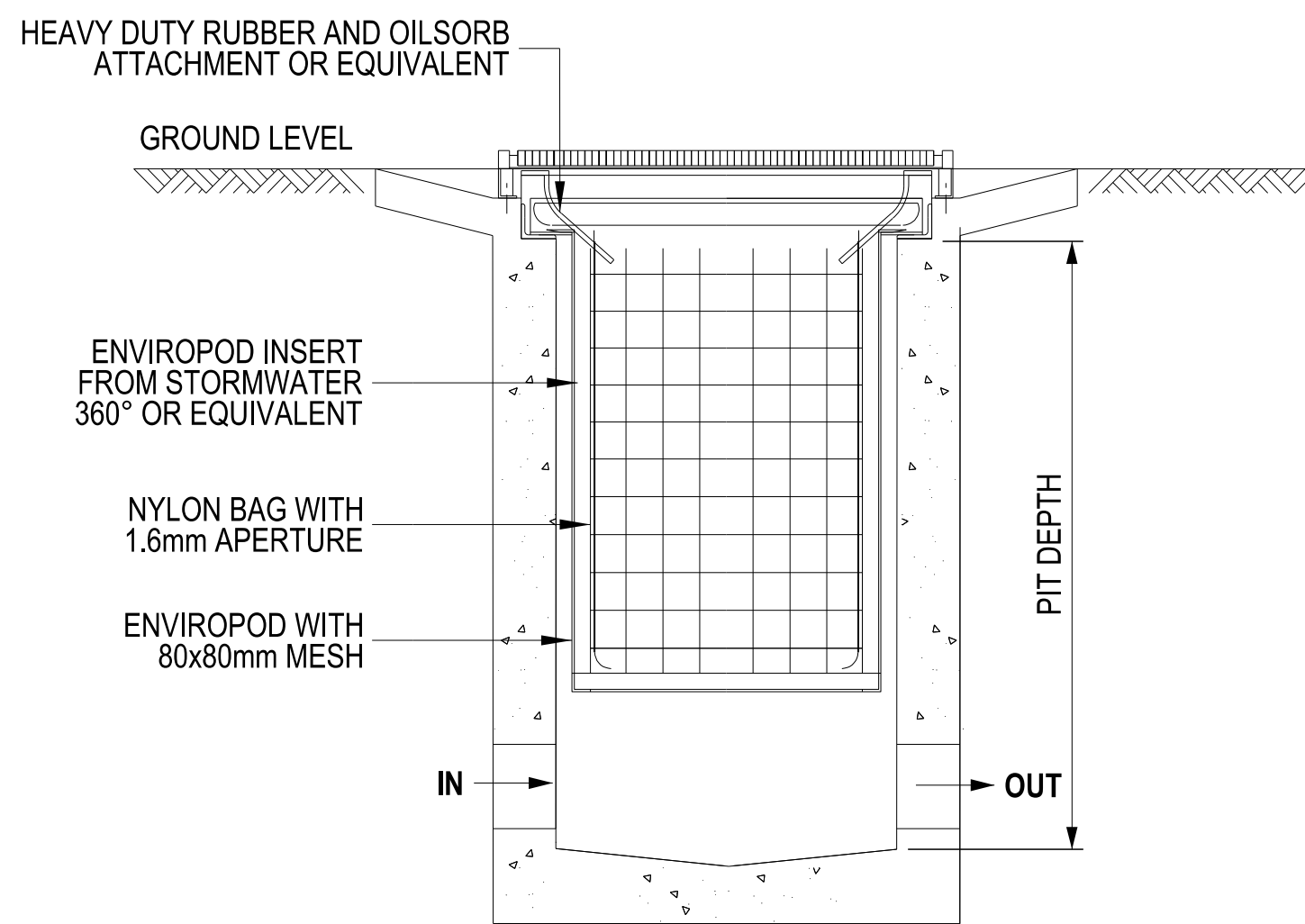
TYPICAL STORMWATER PIT DETAIL

5



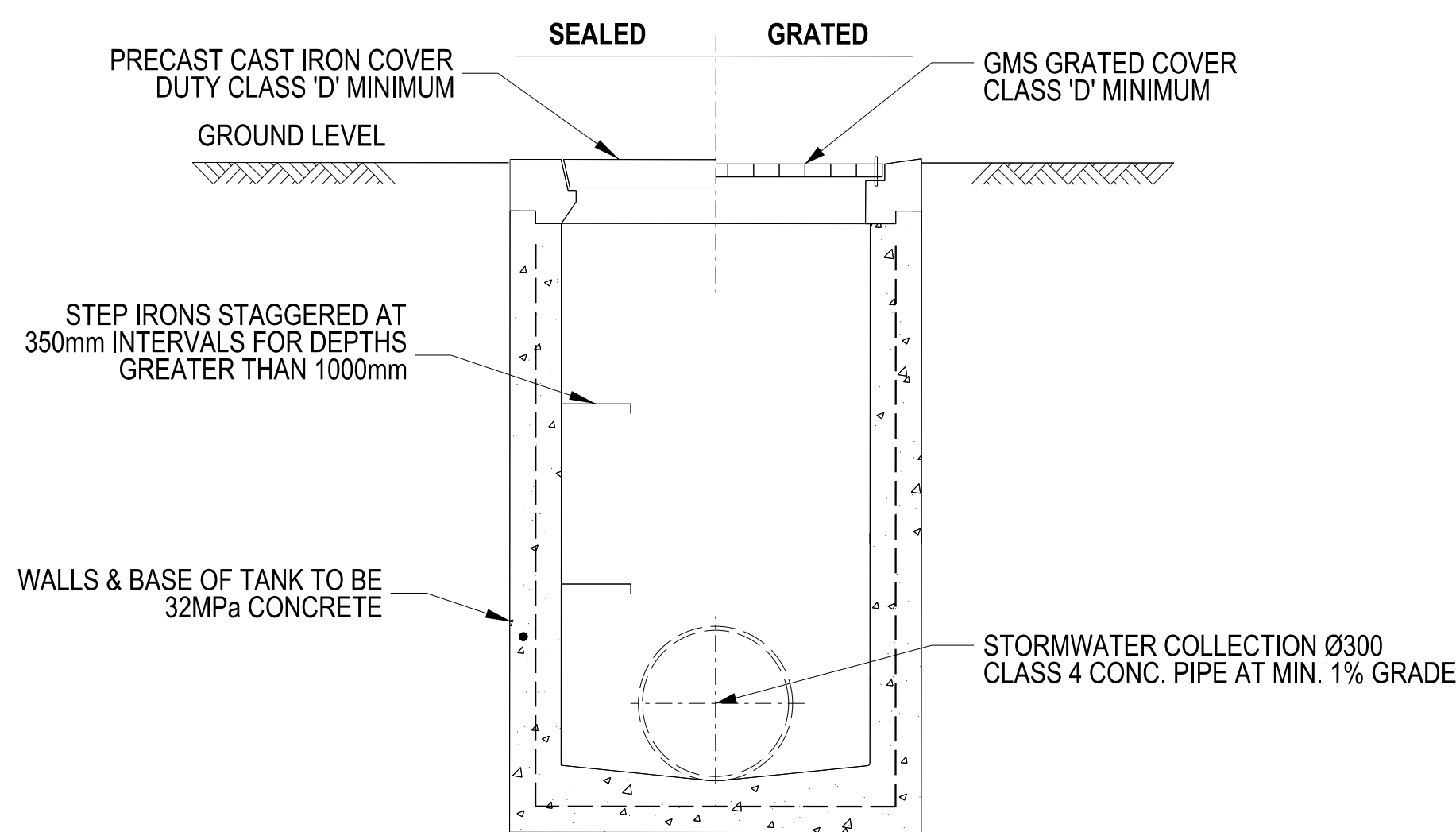
TYPICAL PIPE BEDDING DETAILS

3



TYPICAL STORMWATER PIT WITH ENVIROPOD DETAIL

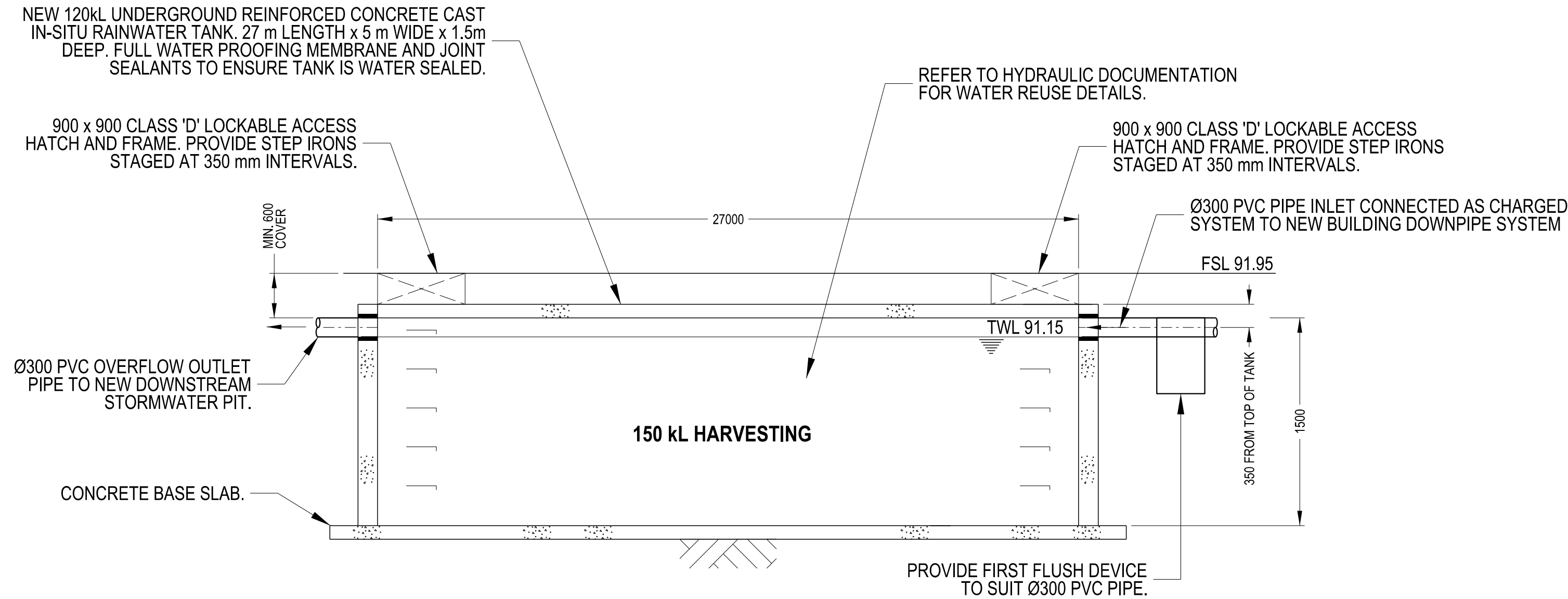
4



TYPICAL STORMWATER PIT DETAIL

5

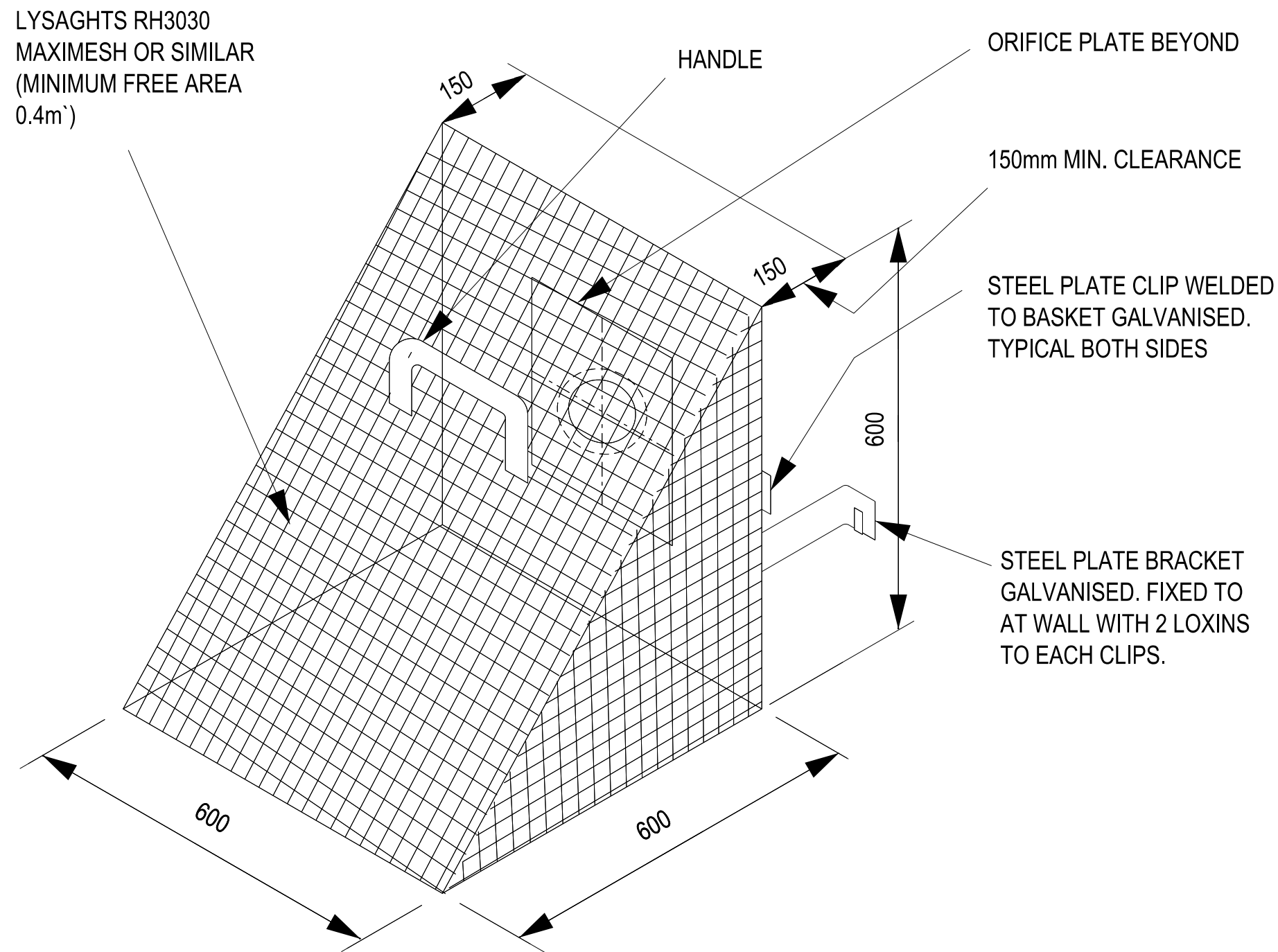
Figure 7 - Typical Stormwater System Details - Sheet 01



TYPICAL UNDERGROUND REINFORCED CONCRETE RAINWATER TANK DETAIL

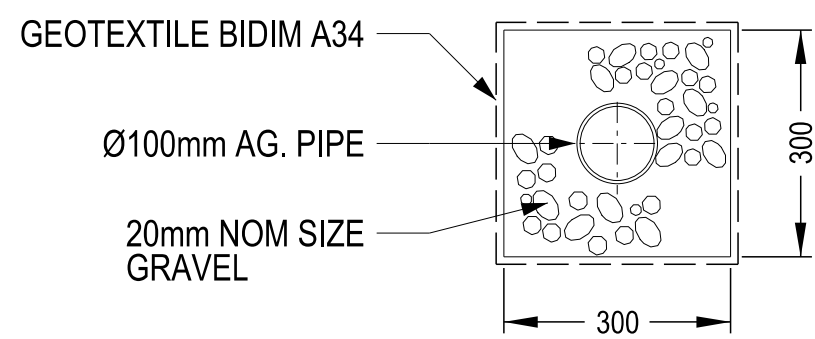
NTS

1



TRASH SCREEN DETAIL FOR OSD SYSTEMS

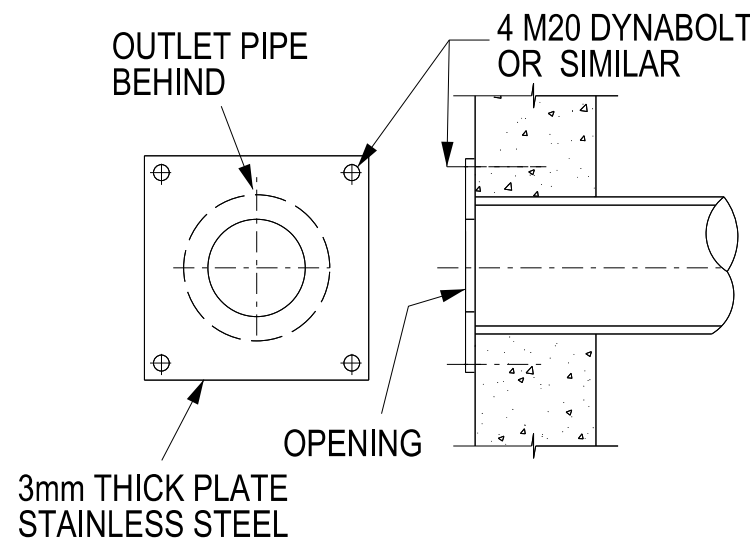
2



TYPICAL SUBSOIL DRAIN

SCALE 1:10

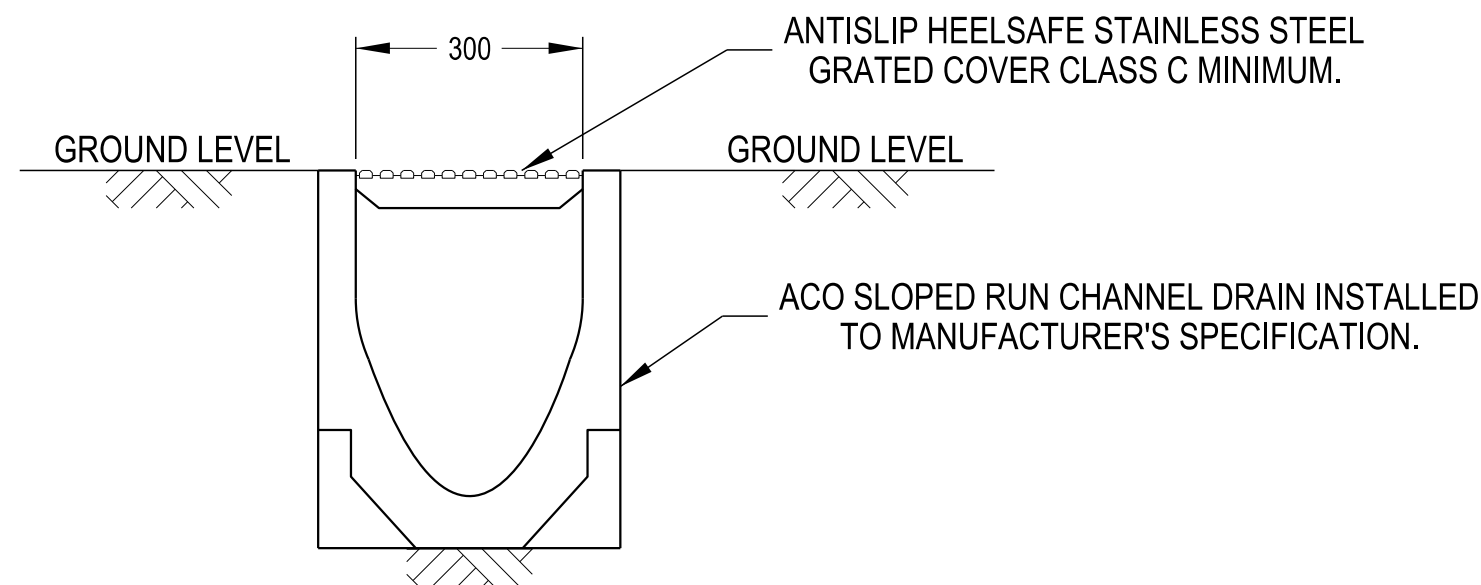
3



ORIFICE PLATE DETAILS

Ø120 mm OPENING

4



TYPICAL GRATED TRENCH DRAIN DETAIL

NTS

5

Figure 8 - Typical Stormwater System Details - Sheet 02

1 The Government Architect's Office, a division of the Department of Finance & Services (the Department) shall not be liable or responsible for any loss or damage arising out of the provision of any electronic document, data or program to any other format or medium, or saving out of any modification or changes that occur in the handling or use of the electronic document, data or program.

2 The recipient or user of any electronic document, data or program is solely responsible for ascertaining its accuracy and its suitability for their purposes.

3 The Department uses virus scanning software to prevent file and system virus attacks but gives no warranty. The recipient or user is solely responsible for their own virus protection.

LEGEND


0 10 20 30 40 50 60 70 80 90 100

200MM

300MM ON ORIGINAL

USE FIGURED DIMENSIONS IN PREFERENCE TO SCALING
CHECK ALL DIMENSIONS ON SITE


REVISION			ARCHITECTURAL	QUANTITY SURVEYOR	LIFT
ISS	DATE	COMMENT	GOVERNMENT ARCHITECT'S OFFICE T 9372 8463 F 9372 8499	GOVERNMENT ARCHITECT'S OFFICE T 9372 8382 F 9372 8444	GOVERNMENT ARCHITECT'S OFFICE T 9372 8103 F 9372 8144
0	04.03.2016	FOR DA REVIEW AND APPROVAL	LANDSCAPE TYRRELL STUDIO T 0419 928 928	STRUCTURAL GOVERNMENT ARCHITECT'S OFFICE T 9372 8206 F 9372 8133	FIRE ENGINEER OLUSON FIRE & RISK T 9372 8206 F 9372 8133
			MECHANICAL GOVERNMENT ARCHITECT'S OFFICE T 9372 8100 F 9372 8144	BUILDING CODE CONSULTANT METRO BUILDING CONSULTANCY T 9600 8477 F 8209 4955	PROJECT MANANGEMENT NSW PUBLIC WORKS T 9852 0143
			ELECTRICAL GOVERNMENT ARCHITECT'S OFFICE T 9372 8146 F 9372 8144	HYDRAULIC GOVERNMENT ARCHITECT'S OFFICE T 9372 8147 F 9372 8144	CIVIL NSW PUBLIC WORKS T 9372 7312 F 9372 7322



Public Works
Government Architect's Office

PETER POULET
NSW Government Architect
Notified Architect ARN 5254
Level 15, Sydney Building, 224 Bowen Place
Sydney NSW 2000 AUSTRALIA

A division of the Department of Finance, Services and Innovation
MARTIN HOFFMAN
Secretary

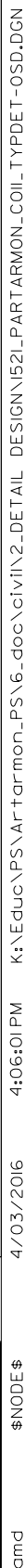


Education

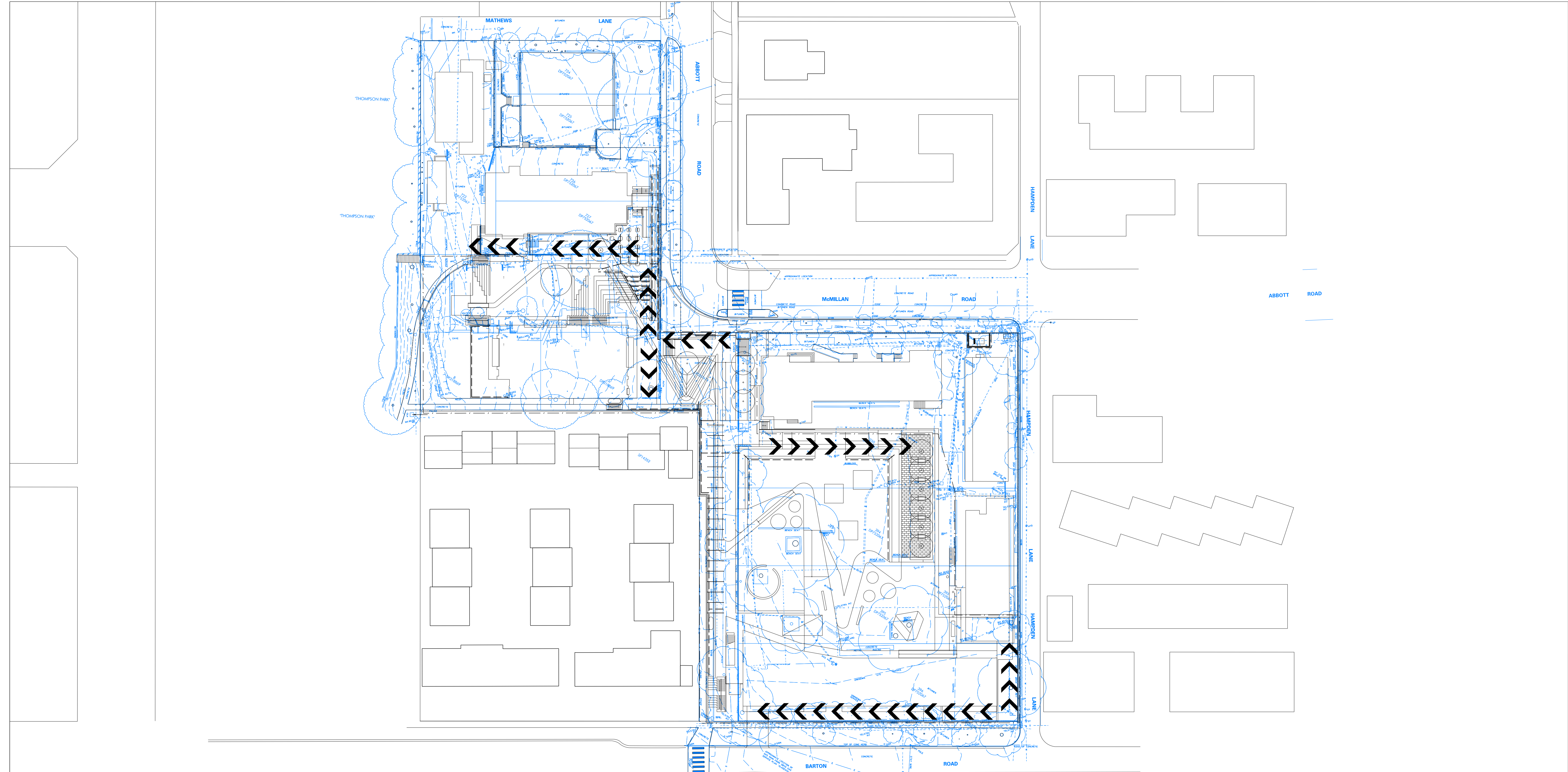
ARTARMON PUBLIC SCHOOL
NEW FACILITIES PROJECT

TYPICAL STORMWATER DETAILS
SHEET 02 OF 02

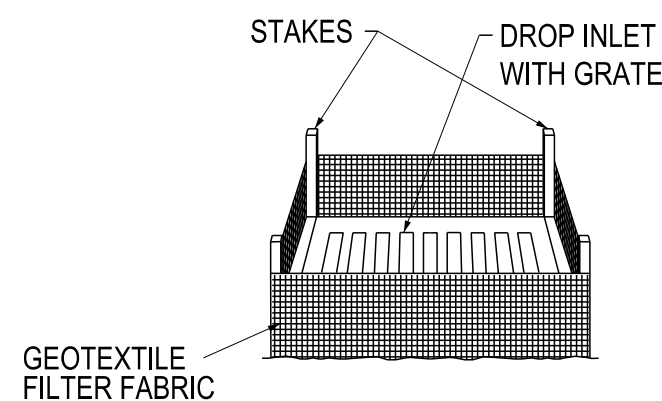
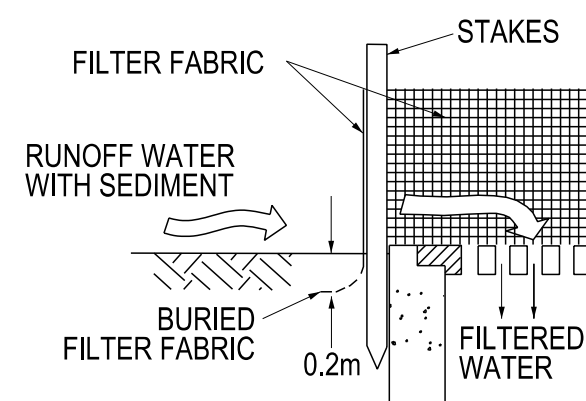
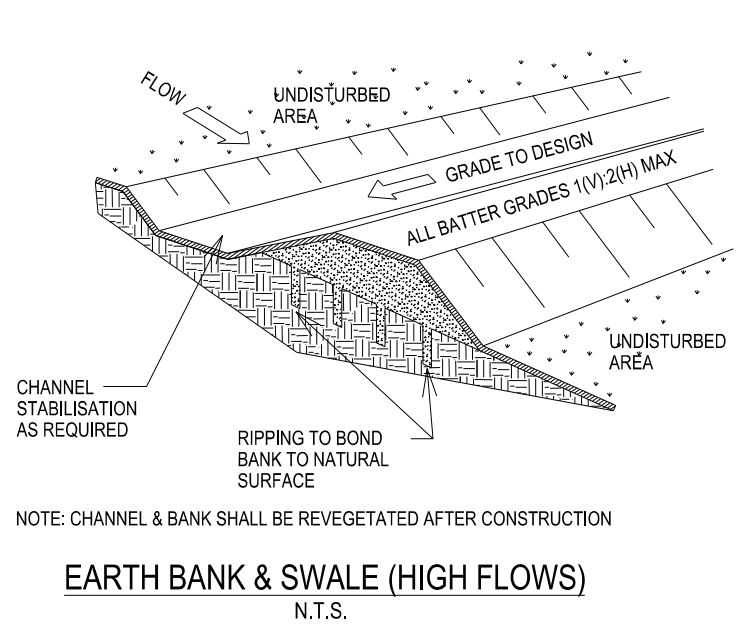
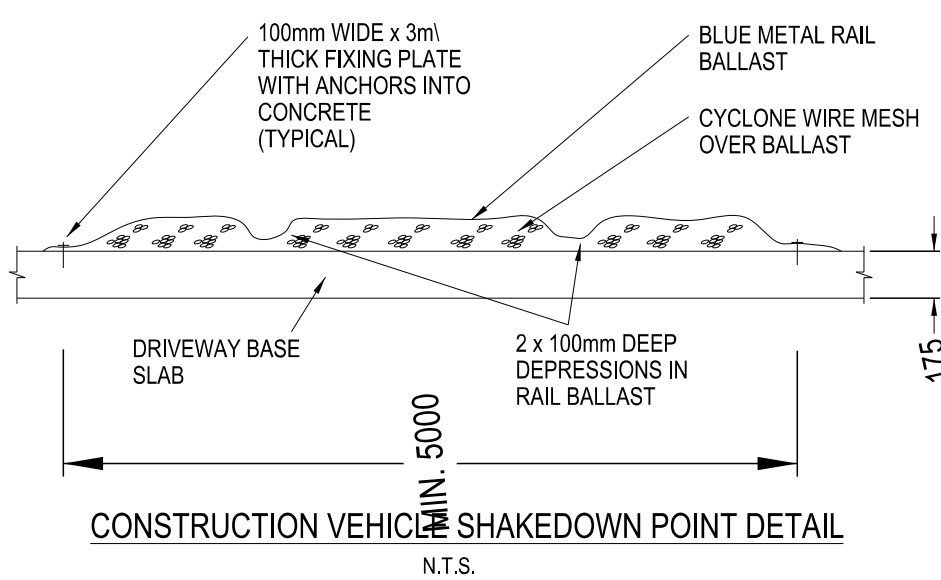
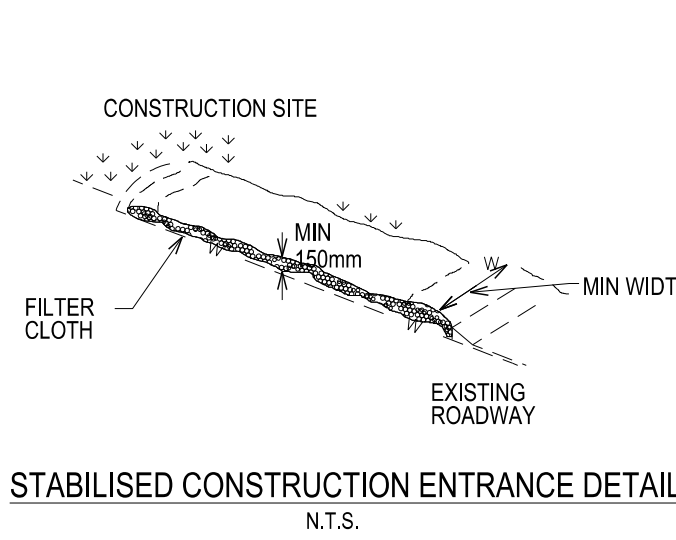
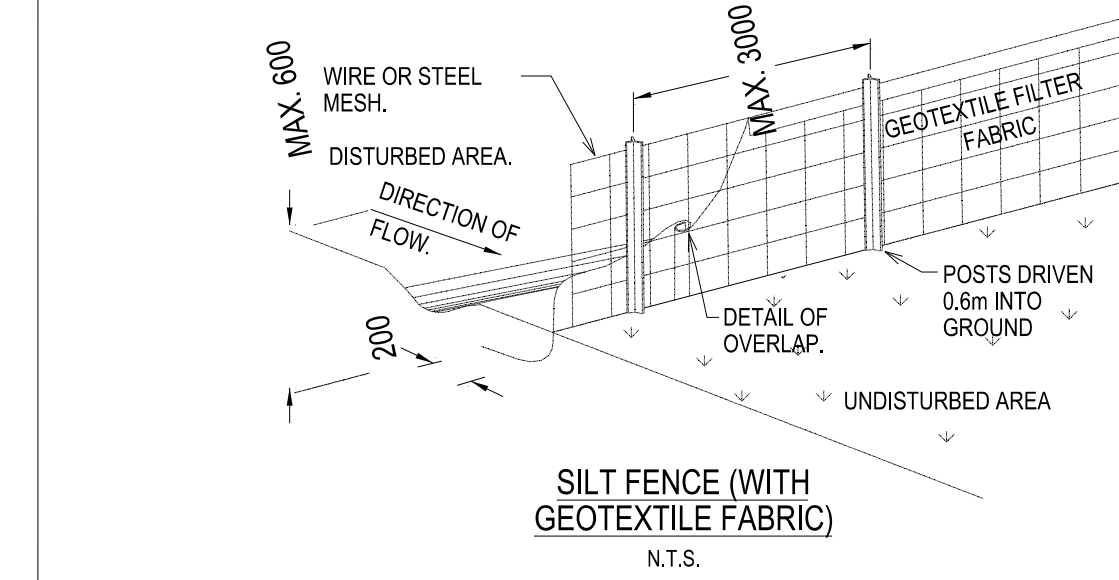
PLAN RM NO		CONTRACT NUMBER	
NTS		1500654	
DESIGNED E.L.	PLOT DATE 4/03/2016	C010	
DRAFTED D.L.	VERIFIED J.G.		
REVISION		0	



cmd	\$NODE\$	4/03/2016
cmd	\$NODE\$	4/03/2016



EROSION AND SEDIMENT CONTROL PLAN



SECTION VIEW
ISOMETRIC VIEW
GEOTEXTILE FILTER FABRIC DROP INLET SEDIMENT TRAP
N.T.S.

1 The Government Architect's Office, a division of the Department of Finance & Services (the Department) shall not be liable or responsible for any loss or damage arising out of the use of any electronic document, data or program to any other format or medium, or relating to any modification or changes that occur in the handling or use of the electronic document, data or program.

2 The recipient or user of any electronic document, data or program is solely responsible for ascertaining its accuracy and its suitability for their purposes.

3 The Department uses virus scanning software to prevent file and system virus attacks but gives no warranty. The recipient or user is solely responsible for their own virus protection.

LEGEND

TEMPORARY SILT FENCE

TEMPORARY CATCH DRAIN

REVISION	ISS	DATE	COMMENT	ARCHITECTURAL	QUANTITY SURVEYOR	LIFT
0	30.11.2015	60% ISSUE DRAFT FOR REVIEW	LANDSCAPE	TYRRELL STUDIO	GOVERNMENT ARCHITECTS OFFICE	GOVERNMENT ARCHITECTS OFFICE
1	17.12.2015	65% ISSUE DRAFT FOR REVIEW	MECHANICAL	GOVERNMENT ARCHITECTS OFFICE	GOVERNMENT ARCHITECTS OFFICE	GOVERNMENT ARCHITECTS OFFICE
2	29.01.2016	95% ISSUE DRAFT FOR REVIEW	ELECTRICAL	GOVERNMENT ARCHITECTS OFFICE	GOVERNMENT ARCHITECTS OFFICE	GOVERNMENT ARCHITECTS OFFICE
3	8/02/2016	98% ISSUE DRAFT FOR REVIEW	HYDRAULIC	GOVERNMENT ARCHITECTS OFFICE	GOVERNMENT ARCHITECTS OFFICE	GOVERNMENT ARCHITECTS OFFICE

Public Works
Government Architect's Office

PETER POULET
NSW Government Architect
Nonikated Architect ARN 5154
Level 19 Macquarie Building, 254 Macquarie Place
Sydney NSW 2000 AUSTRALIA

MARTIN HOFFMAN
Secretary

ARTARMON PUBLIC SCHOOL
NEW FACILITIES PROJECT

EROSION AND SEDIMENT CONTROL
PLAN AND DETAILS

PLAN RM NO

CONTRACT NUMBER

1500654

SHEET NO

C012

REVISION

3

DESIGNED E.L.

DRAFTED D.L.

PLOT DATE

8/02/2016

VERIFIED J.G.